



Building Community, Enriching Education

ANNUAL REPORT

July 2019 - June 2020

Lewisville ISD Education Foundation
1565 C W Main St
Lewisville, TX 75067
469.948.2022
info@lisdef.com



**léf LEWISVILLE ISD
EDUCATION FOUNDATION**

The Lewisville ISD Education Foundation, founded in 1990, is a public, non-profit 501(c)(3) corporation. Created to support excellence in education, LEF establishes and distributes supplemental funds for enrichment purposes in designated program areas. The Foundation is a passionate group of community volunteers dedicated to investing in the future of our children and to encouraging innovative teaching and higher education for the 13 communities served by Lewisville ISD.

It was the best of times. It was the worst of times.

I know I'm plagiarizing a bit here but Mr. Dickens's classic opening lines could certainly summarize how we all felt about the 2019-2020 fiscal year. There were good times and not-so-good times.

Before the pandemic, the Lewisville ISD Education Foundation smoothly transitioned from Connie Pelphrey's wonderful leadership to mine. Connie had taken LEF to new heights during her tenure, and I've had the great pleasure of experiencing the goodwill she created in our communities toward LEF. Her retirement was well deserved, and her dedication to LEF continues to be worth celebrating.

In 2019, we awarded nearly \$160,000 in grants, raised almost \$190,000 during the LISD Employee Giving campaign, entertained more than 450 people at our annual Evening for Education gala, and built new relationships with community partners from Flower Mound to Frisco. Two new staff members joined us – Julie Donahoe (Director of Advancement Services) and Adriana Mena (Director of Annual Giving and Marketing) – to round out our team. Things were going well.

In early 2020, the trend continued, and we were preparing to award more than \$260,000 in scholarships and fellowships as well as on track to make our annual LEF Golf Classic a sellout. We were researching new tools to help us move into the digital fundraising space and broaden our reach on social media channels. Most importantly, we were looking ahead at ways that we could celebrate our 30th anniversary. Needless to say, we were cautiously optimistic about where we were headed.

Then, it happened.

It stopped us for a few weeks. It slowed down donations for a few months. It made us reschedule our golf tournament and annual gala, but it did not shut us down.

It also gave us the opportunity to reinvent ourselves, to look at what we did well and what we didn't. We were able to discover systems that made us more efficient and gave us greater capacity to serve LISD teachers, students, and staff. You are reading this annual report now because of a need we saw to communicate more clearly and more frequently with our existing and future advocates.

We hope that in our critical decision making during an unprecedented time of change that we carefully considered the impact these decisions would have on our strongest community partners and that our choices would make it easier for people to make a difference through LEF programs. As we look toward the 2020-2021 fiscal year, we want you to know that our past has made possible the opportunity to shape our future, and we want you to be a part of that future. In any way, shape, or form, from volunteering to read a scholarship application to establishing a new teacher grant, we want our stories to become your stories.

From our family to yours, thank you for being a part of LEF and for helping us build community and enrich education.

In Service,


Thomas White, PhD
Executive Director

LEF EXECUTIVE COMMITTEE

STEPHEN DUBNER, PRESIDENT

MICHELLE CREE

CHUCK ELSEY

DAMION ROBERTSON

PAM NELSON

TOM HESLEP

RANDY CANIVEL

TERRY ALLEN

MARY JACOBY

LEF BOARD MEMBERS

LEAH MONTEZ

TRISHA SHEFFIELD

LINDA RUTHERFORD

JOSH ASHFORD

RAY DAVID

ANDY EADS

LINDSAY POLYAK

MONIKA BRINK

YOLANDA MURRAY

SUE BOWMAN

TANYA GANDY

EX-OFFICIO MEMBERS

DR. KEVIN ROGERS

KATHERINE SELLS

LORI FICKLING

LORI WALKER

ERIN CARNEY

LEF EMPLOYEES

THOMAS WHITE

SHERAH ROBINSON

JULIE DONAHOE

ADRIANA MENA

BELIEVE IN

TEACHERS

Great Stories About Great People 5

STUDENTS

Celebrating Success..... 8

EDUCATION

Partnering With LISD 12

COMMUNITY

Acknowledging the Advocates Who Make It Possible 14

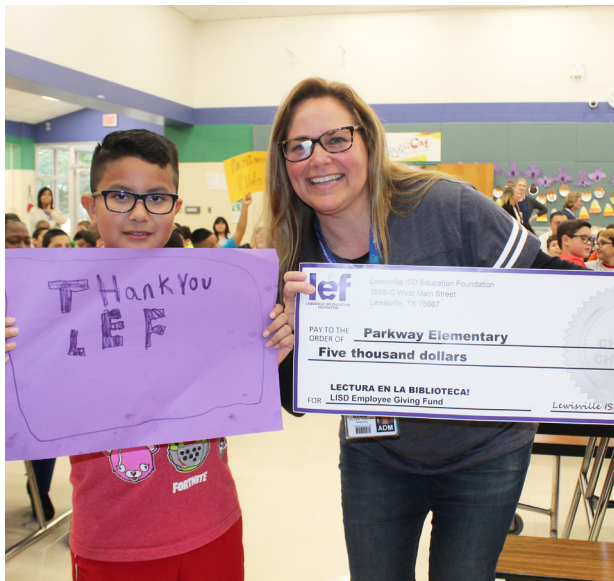


For the 2020-2021 Employee Giving Campaign, we created a slogan to inspire LISD teachers and staff to continue their incredible work. “Believe in teachers, students, education, and community” quickly became a mantra for us. It motivates us to continue our work to support them.

Teachers are the heartbeat of our district and supporting them with grants and awards not only improves education for all students, but also enhances our communities and engages the next generation of leaders.

TEACHERS





- 1 Chords and Songs and Ukuleles**
Gone are the days of the old-school recorder at Camey Elementary thanks to the Thomas C. Cooper Memorial Grant and Employee Giving Grant. Instead, students grooved in style as they learned musical scales and chords on ukuleles with their classmates.
- 2 Sweet Tooth Bakery**
Students in Family and Consumer Science classes at Downing MS fundraise for troops every year with a student-run bakery. After replacing the class' broken oven, courtesy of the Sharon Dunning Memorial Grant and Employee Giving Grant, the students were able to raise over \$2600 this year to buy items for troops overseas.
- 3 Sensory Room**
The sensory room at Hebron Valley Elementary was made possible by an Employee Giving Grant, and was designed to help students struggling with social, sensory or emotional challenges feel calm and organized before going to class so they can better focus on their daily instruction and learning.
- 4 TI-30XS MultiView Scientific Calculators**
The Buck Family Honorary Grant helped eliminate the learning curve of using various calculators by providing enough TI-30XS calculators for the whole classroom.
- 5 Radiant Treasures**
The Colony HS Life Skills students ran a successful business this year where they made custom orders such as t-shirts and mugs for patrons. Made possible by the Rylan Homes Grant and Pat Watts Memorial Grant, business boomed throughout the year and students learned new vocational skills while spreading joy throughout the community.
- 6 Circle of Friends**
The Changing Children's Lives Grant assisted Timber Creek Elementary in creating an environment that addresses the needs of students with communication disorders by providing them with opportunities to practice social skills with others through collaborative games, puzzles and crafts.
- 7 Amazing Architects**
STEM driven learning was so beloved by students at Hebron Valley Elementary that there simply wasn't enough materials to go around. Then came the Employee Giving Grant and the Dr. Nandlal and Sheila Singh Family Teaching Grant to the rescue! Now, students of all grades can now enjoy the building and designing of complex structures using legos.
- 8 Lasso a Great Book!**
The library at Highland Village Elementary added an incredible amount of 68 physical library books and 36 digital copies to its catalog this year, thanks to the City of Highland Village Grant.
- 9 These Are a Few of Our Favorite Things...**
Many ESL students at Central Elementary love reading and this year, thanks to the generosity of the Point Bank Fund-A-Future Grant, the library was able to provide a plethora of new books for students to read - in both english and spanish.

2019 Teacher and Campus Grants Awarded Nearly \$160K

LEF Awards Record High Amount in Grant Money, Making This the Third Consecutive Year the Amount Awarded in Teacher Grants Increased



Nearly 315 Graduating LISD Seniors earned \$260,000 in scholarships from LEF in 2019-2020 while fellowships are awarded to help teachers and staff continue their professional training. Fellowship awardees along with the Senior recipients from each of the 5 high schools had to find creative ways to thank their respective donors when quarantine forced us to cancel our annual scholarship ceremony.



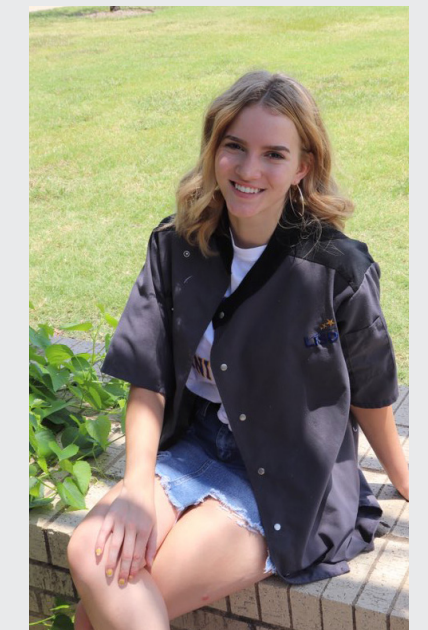
Katherine Spruce
Flower Mound HS
Flower Mound High School PTSA Scholarship



Saxon Lewis
Hebron HS
Hebron HS Football Booster Club Scholarship



Kayla Kellaway
The Colony HS
Charlie Haynes Memorial Scholarship



9th Annual Chin Cultural Festival

Lewisville High School Harmon Past and present recipients of the LHS Chin Student Scholarship gathered for a private roundtable Q&A with Harvard Law professor and human rights lawyer, Yee Htun.



BreAnn Manuel
LISD Learning and Teaching
Dr. Jerry Roy Fellowship



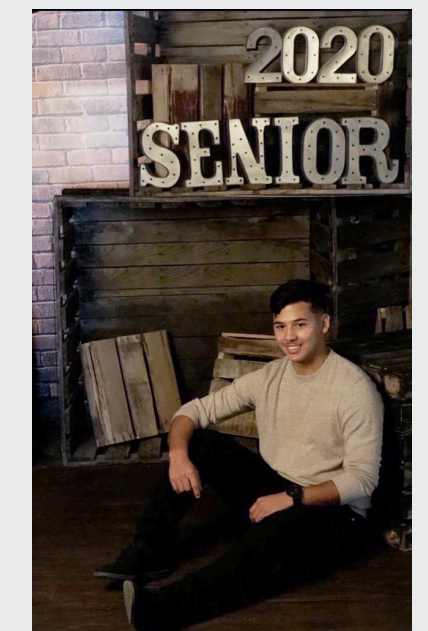
Kendall Veazey
LISD Learning and Teaching
Doug Killough Memorial Fellowship



Camryn Upshaw
Marcus HS
Kara Barfknecht Memorial Scholarship



Garrett Karbs
Marcus HS
Christa McAuliffe Elementary Scholarship



Hector Calderon
Lewisville HS
Timi Winter Memorial Scholarship

Getting Creative During Quarantine

In the Midst of a Global Pandemic, Scholarship Recipients Safely Celebrated Their Success Via Virtual Meetings and Social Media #LEFScholarships



Elizabeth Harris
The Colony HS
Jessica Martinet Memorial Scholarship

Every year in the springtime, the Lewisville ISD Education Foundation is proud to host an awards ceremony to celebrate the accomplishments of all the scholarship recipients. Spring of 2020 brought about many challenges for not just the LISD community, but across the globe as stay-at-home learning was put in place to help battle a global pandemic and quarantine became the norm.

Due to this, the annual ceremony was cancelled but excitement to announce and celebrate the 315 Class of 2020 scholarship winners did not lessen as LEF converted the ceremony into an open week-long celebration on social media that turned news feeds into a virtual stage for all to celebrate.

Submitted videos and photos of scholarship recipients were posted online and were immediately met with praises and messages of congratulations from the community. Many seniors took the opportunity to thank the donors and providers of their scholarships, sharing their letters of gratitude, handmade posters, and video messages online.

"Hey there Hebron Valley! I would like to thank you for selecting me as your HVE PTA scholarship recipient," the voiceover of Kayla Delay announces as photos of her younger self smiling widely in a Hebron Valley Elementary shirt pan across the screen. "I will be attending the University of Oklahoma in the fall to study nursing. I just want to let you all know that I'm honored and want to thank you very much. Go Huskies and go Sooners!"

The online celebration flourished but in the background, a special surprise was being planned for the first ever winner of the Jessica Martinet Memorial Scholarship.

In a quiet neighborhood on a sunny Wednesday afternoon, a police officer used his car's PA system to call out for the winner to exit her house. Elizabeth Harris, not knowing what was happening, stepped outside to find a group of familiar faces spread out on her lawn, led by TCHS teacher Jennifer Shaw who organized the surprise announcement.

Lawn signs, decorations, and a drive-by parade accompanied their exciting announcement that Harris had been awarded the \$20,000 scholarship dedicated in the memory of her late friend, Jessica Martinet.

"Everyone who loved Jess was there, and I am so proud that I get to carry a scholarship in her name and continue bringing her love to new people," said Harris. "Jess was incredible, and I love her so much, so being given this award is the most incredible thing I could imagine."



Rhett Reasonover
Hebron HS
CoServ Charitable Foundation Scholarship

"Beyond excited to have received a scholarship from @CoServ_Energy as part of the @LEFforLISD scholarship program!! Although there will unfortunately not be a ceremony, I did my best to compensate with this homemade certificate. Thanks to all involved!! #LEFScholarships"

via Twitter

Aracely Ramirez Gomez

Lewisville HS

Richard LaMotte Memorial Scholarship



342 SCHOLARSHIPS
AWARDED TO LISD CLASS
OF 2020



\$258,955 AWARDED

Working closely with LISD, community partners and LEF collaborated on multiple projects throughout the year. Project-based fundraising allowed the district and its programs to thrive and create a better learning environment for everyone.



EDUCATION

Assurant Partners with LISD in Starfish Creations Cafe Project

Searching for Ways to Engage with the Community, Assurant Answered the Call when Project Search Approached Them With an Idea...

The district's Project SEARCH program flourished in the spring of 2020 thanks to the generous resources and support provided by the Assurant Foundation.

A purpose-driven company that seeks to engage with and strengthen their local communities, Assurant happily worked with the district and LEF to fund the Starfish Café, a hospitality and food service run by students with learning or developmental disabilities.

"The goal of the program is to provide real-life work experience combined with training in employability skills to help individuals with disabilities make successful transitions to productive adult lives," says Amy Clark, a Project SEARCH instructor and special education teacher since 2006.

Work-based learning and internships like this offer students meaningful and engaging educational opportunities by connecting classroom lesson plans to learning on job sites in the community.

"This kind of learning experience can help our interns make career decisions, network with potential employers, select courses of study, and develop skills relevant to future employment," says program instructor Tamara Ryan who has worked in special education for 3 years.

When Clark and Ryan approached

Assurant with the idea for Starfish Café, the importance of this type of educational program was instantly recognized by Assurant.

"Assurant is a learning culture that greatly values the importance of education at all levels. Supporting education is essential as we create diverse and inclusive opportunities for the workforce of the future," says Anne Phillips, Director of Human Resources.



This partnership with LISD's Project Search program goes further than a monetary donation as well. The Starfish Café would also serve as a foundation for the launch of the Assurant Stars Program – a program that supports creating opportunities for individuals with special needs to fill certain jobs at Assurant's Lewisville

location in a more inclusive manner.

"Creating a program like this requires a lot of learning and experience sharing opportunities – and the help of a community partner like LISD's Project Search to help identify potential local candidates who may be good fits for these jobs," says Phillips. "Through the partnership we also can gain insights on working with those who have different abilities – which is helpful to our Assurant employees and supervisors in Lewisville."

As a purpose-driven employer, Assurant finds partnering with and supporting LISD and LEF a great investment of their resources to help the community, the children and families served. Particularly this year, the COVID-19 pandemic challenges all levels of education in providing safe learning environments, tools and resources to students and families of all different backgrounds. Assurant continues to support the community with grants for other LISD projects such as the 2020 Back to School Fair.

In a difficult time, the challenges the community faces only reinforces the ever-constant need for educational resources. Partnerships with companies like Assurant is what makes LEF successful in providing support for LISD to address all needs of education whether it be in-person learning, a student-run café, or a wide network of virtual smiling faces on WebEx.



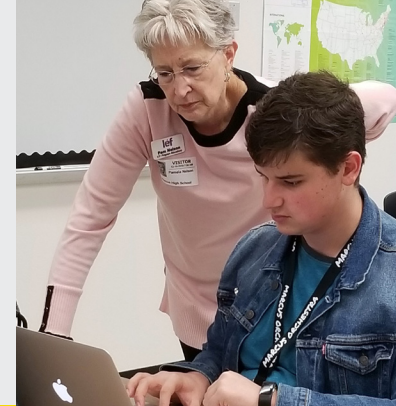
BACK TO SCHOOL FAIR
COVID-19 RELIEF
BOSCH COMMUNITY GRANT
EMPLOYEE EXCELLENCE AWARDS

OTHER LISD + LEF PROJECTS



COMMUNITY

It takes a group of advocates to make public education strong. Thanks to partners and individuals across our 13 communities, LEF and LISD are able to increase the quality of life for everyone in and around our schools.



Making an Impact on Local Education

Committed to Local Community Involvement, HilltopSecurities Has Dedicated 15 Years of Support to Lewisville ISD

The success of LEF's mission to provide support for the district's teachers, students, and communities has always been directly impacted by the altruistic support of great community partners such as HilltopSecurities. A corporation operating in over 20 states, HilltopSecurities conducts business on a national scale and yet, they not only persist but excel at its mission to provide support for local communities, regardless of where they are.

"We make a real point to give back. We've been involved in supporting LEF for every bit of 15 years and we're just excited to be involved and continue to support the foundation," says John Martin, Regional Managing Director for HilltopSecurities. "Our firm is philanthropic, we're encouraged to give back to communities where we live and work."

HilltopSecurities has a rich history of supporting education, going back to its parent company's chairman Gerald J. Ford, for whom the football stadium at Southern Methodist University is named. The firm's dedication to supporting local education continues to make a substantial



John Martin, Regional Managing Director

impact to this day. Over the years, LISD has grown many programs with HilltopSecurities' aid such as the annual Back to School Fair, Number Sense Tournament Scholarships, and sponsorships in LEF's Evening for Education and Golf Tournament which raise funds for scholarships, fellowships, and teacher grants.

"Some of the biggest challenges that education faces include misinformation regarding how important public schools are to our communities and the job that they do. I think that there are many more

opportunities in public education than people realize," says Martin.

A resident of Flower Mound and father to two proud FMHS graduates, Martin has a ringside seat to the educational benefits that develop from community donations and partnerships. With a decrease of support from state and federal governments, the betterment of public education relies more heavily on supportive local legislation and heavy community involvement from partners like HilltopSecurities.

"Our hope is to support local participation, not just with LEF but with other school foundations we're involved with as well," says Martin.

Districts and nonprofits across the country benefit from the firm's dedication to community involvement. Another nearby institute of education the firm contributes to is the University of North Texas. An endowment from HilltopSecurities funds scholarships to the Superintendent Certification program, providing a high-quality, research-based preparation for future school leaders. Additionally, the firm's internal professional development platform, HilltopSecurities University, provides training and mentoring programs to employees and community members as well as partnering with universities to promote student programs.

"Giving back has always been a real focus for us. It's not just something that we do by rote but it's something that's ingrained into the culture of the company, into the individuals and employees," says Corporate Communications Manager, Ben Brooks.

Partnering with exemplary socially responsible leaders like HilltopSecurities is one of the key ways LEF is able to make a real difference in the district. The significance of that difference is evident to anyone involved in the district.

"Getting to really see the dynamics that go on in the classroom, things that you normally don't see and wouldn't know about," expresses Martin. "To celebrate those things with those educators and how they're coming up with great new ideas, to be a part of that and to be a part of an organization that rewards those teachers for thinking outside the box – that's certainly always very rewarding."



Ben Brooks, Corporate Communications Manager

Investing In Yourself

How Welch HVAC Is Creating a Potential Workforce Through Supporting Local Education

As the HVAC industry continues to boom, businesses like Welch HVAC are experiencing an interesting dilemma where work is plentiful but qualified people looking to join the trade are scarce. Starving for good people, company founder, Tim Welch, looks at partnering with LEF as more than just a gift to the community he loves but also as an avenue to build a potential pipeline of future employees.

Since moving to Texas from Indiana over 20 years ago, Welch has been involved in helping build and renovate over 20 different schools in Lewisville. He's seen first hand the unique educational experiences Lewisville ISD offers students and wants to help create more opportunities for students looking to join a trade.

"There's more options than ever before for young people. With trades, you can begin a steady career path at eighteen years old where you can immediately begin making money instead of borrowing money. The opportunity for entry level has never been better than it is right now. Now is the time and work is plentiful," says Welch.

While many school districts only push the traditional college route, Lewisville ISD offers extensive and innovative programs for students who are interested in trades as well. In the very building that Welch renovated in the spring of 2020, the Dale Jackson Career Center will be reopened in the Fall of 2020 as the Technology, Exploration & Career Center West (TECC-West).

Here, an HVAC program will be available to students to learn everything from safety, tools and codes to installation, maintenance and construction management. By the time a student graduates from high school, they can have all four levels of the NCCER's HVAC certifications.

"With the career centers built, we want to be involved

in helping build a program that fosters opportunities for trades, not just HVAC or plumbing, but all of them," says Welch. "All trades are just starving for good people. The work is no longer just a hammer and chisel type of job. Most of what we do is computer based; new technologies come up all the time and our employees have to be able to keep up with it. Young people know how to adapt to new technology much quicker."

By partnering with LEF and sponsoring fundraising events for scholarship and teacher grant funds, Welch knows he has an opportunity to not only make a difference in a child's daily learning environment but also in the investment of their future post-graduation. The significance of that impact is immensely treasured by Welch and his team.

"When you drive by and look at the buildings you helped construct, they are something to be proud of, something you can feel good about," says Welch. "They're not being built for a profit, they're being built for a cause."



Brandi Stefanski, Nick Laughner, and Tim Welch of Welch HVAC

Our Supporters 2019 - 2020

Corporate Sponsors

Community Partners \$20,000+



Leadership Partners \$15,000+



District Partners \$10,000+



Major Partners \$5,000+

- Pogue Construction
- Assurant
- Medical City Of Lewisville
- Texas New Mexico Power
- Point Bank
- Mannatech
- The Depository Trust and Clearing Corporation

Classroom Partners \$2,500+

- G&A McAdams Company
- Northstar Builders Group
- Jackson Construction
- Frost Bank
- Independent Financial
- Holcim (US) Inc.
- Core Construction
- Your Home Free, Team Nelson
- Baylor Health Care System
- Walsh, Anderson, Gallegos, Green & Trevino, P.C. Attorneys At Law
- Medical City Children's Urgent Care

Classroom Partners (continued)

- Huffines Chevrolet
- Student Partners \$1,000+
- Bill Utter Ford
- Balfour Beatty Construction
- Jostens
- General Dynamics
- Bonded Lighting Protection
- Valley Ridge Construction LLC
- Wood Auto Park
- MSU-Texas (Midwestern State University)
- Walmart Foundation
- Rainstone Resources LLC
- Ford Country Of Lewisville
- University Behavioral Health Of Denton
- Bank Of The West
- Huffines Auto Dealership
- ARMKO Industries, Inc.
- VLK Architects, Inc.
- Salerno's Pizza Company

Student Partners (continued)

- Merill Lynch
- Castle Hills Chiropractic
- The Depository Trust and Clearing Corporation
- Swingle, Collins & Associates
- J.C. Lads Corporation
- J.P. Morgan Securities, LLC
- Dallas Metropolitan Chapter
- SPEBSQSA Inc. DBA The Vocal Majority
- International Aviation Support
- Access Bank
- McCall Parkhurst & Horton LLP
- Piper Sandler
- Education Advocates
- YourCause, LLC Trustee for PepsiCo Foundation
- Green Meadows Design and Landscaping
- North Central Texas College
- Mckesson Foundation
- Guru Academic Advising LLC

DTCC

The Depository Trust & Clearing Corporation

For the past 4 years, the DTCC has been a corporate partner of LISD, supporting multiple needs specifically around the area of STEM readiness. In March, when schools closed to help battle COVID-19, the DTCC was quick to offer assistance, donating a large sum that helped provide students across the district with school supplies to support at-home learning.



Education Advocates (continued)

- The Colony ER
- Republic Services
- Panasonic Surveillance and Security Solutions
- The Excel Center
- DTCC Cares
- LJA Metals Inc.
- Bricolage Behavioral
- Fitness Foursome Ventures, LLC
- First Student
- BB&T
- Law Offices of Phillip Herr
- Dogtopia
- Studio 360 MedSpa
- COPAS of Dallas
- Noonday Collection
- Trusted ER Coppell

Community Organizations (continued)

- Land O'Lakes Quilt Guild, Inc.
- Lewisville Lions Club
- Lewisville Masonic Lodge #201
- Lewisville Morning Rotary Club
- Metro Relief
- The Colony Road Runners Club
- United Educators Association Inc
- United Way Of Denton County Inc.
- WGG Foundation

Booster Clubs & PTA's

- Arbor Creek Middle School PTA
- BB Owen Elementary PTA
- Briarhill Middle School PTA
- Christa McAuliffe Elementary PTA
- Donald Elementary PTA
- Flower Mound High School PTSA
- FMHS Boys Basketball Booster Club
- FMHS Lady Jaguars Basketball Booster Club
- FMHS Rosette Booster Club
- FMHS Volleyball Booster Club
- Hebron Band Booster Club
- Hebron Girls Basketball Booster Club
- Hebron High School Cheerleader Booster Club
- Hebron High School Football Booster Club

Booster Clubs & PTA's (continued)

- Hebron High School PTSA
- Hebron High School Theatre Boosters
- Hebron HS Choir Booster Club
- Hebron Valley Elementary PTA
- Hedrick Elementary PTA
- Heritage Elementary PTA
- Highland Village Elementary PTA
- Jaguar Spirit Booster Club - FMHS Cheerleaders
- Killian Middle School PTA
- Lewisville High School Softball Booster Club
- Lewisville ISD Council of PTAs
- LHS Baseball Booster Club
- LHS Farmerettes Drill Team Booster Club
- Liberty Elementary PTA
- Liberty Elementary School
- Marcus High School Tennis Booster Club
- Marcus Swim and Dive Booster Club
- McAuliffe Elementary
- TCHS CC/Track Booster Club
- The Colony High School
- The Colony High School PTSA
- Topcats Booster Club, Inc
- TX-20011 Air Force JROTC Booster Club - FMHS
- Wellington Elementary School

Community Organizations

- Cross Timbers Rotary Club
- Charities, Inc.
- Fidelity Charitable Gift Fund
- Flower Mound Rotary Club
- Greater Lewisville Lion's Foundation, Inc
- Henry Foundation
- Highland Village Women's Club
- Lake Park Seniors Men Golf

Employee Giving Campaign 2019 - 2020

Their names may not all be listed in these pages but that's because we would run out of ink before we finished listing them all out.

Every year, LISD teachers and staff participate in our annual Employee Giving Campaign which helps fund teacher grants, scholarships, employee awards and much more.

During the 2019 - 2020 year:

- Nearly 50% of employees participated
- More than \$180,000 Raised
- \$125,000 returned to campuses via special programs and teacher grants



- | | | |
|---------------------------|-------------------------------|------------------------------------|
| Cowell, Kelli | Fitzpatrick, Tami | Huber, Michelle |
| Cox, Angie | Fleming, Barbara | Hudnall ED D Hudnall, Anna Kathryn |
| Cox, Marla | Flowers, Lindy | Hughes, Katherine T |
| Crawford, Cheryl | Foran, Barbara | Humphrey, Randall |
| Crawford, R.L. and Brenda | Ford, Linda | Hyman, Laurie |
| Cree, Brian and Michelle | Franklin, Jane A | Jackett, Jennifer |
| Crossland, Betty | Franzyshen, Henry | Jacoby, Mary |
| Cunningham, April | Franzyshen, Ronald and Eloise | Janvrin, Brian |
| Dasher, Greg and April | Gardner, Lisa | Jennings, Mary |
| David, Ray | Genpurch, Millwood | Johnson, Johnny |
| Delamarter, Kathryn E. | George, Lisa | Johnson, Shannon |
| Denard, Charles and Nan | Gibbons, Mary | Jones, Kristin |
| Desjardins, Sheryl | Gladstone, Karen | Jordan-Glenn, Judy |
| Dideon, Christine | Gooding, Richard and Martha | Just, George |
| Dinsmore, Kathryn | Grantham, Robbie | Keane, Deirdre |
| Dixon, Ann V. | Gray, Adam S | Kelly, Tatiana |
| Donahoe, Steven and Julie | Gregg, Vernell | Kenny, Patrick |
| Donnelly, Alexis | Gregory, Wilbur T | Kerbow, Russell and Becky |
| Doran, Pamela | Grubb, A M | Kesel, David |
| Dubner, Stephen | Ha, Jung | Kies, Susan |
| Dulin, David | Haas, Elizabeth | Kilam, Kim L. |
| Dynes, Patricia | Haines, Krista | Kilgore, Edward and Kathy |
| Edgar, Gloria Pacheco | Hamel, Annette | Klotzman, Abbie |
| Edwards, Bill | Hannon, Edward and Marilyn | Knighton, Sherrel |
| Emanuel, Emil | Harpole, Leah | Kobus, Rudy and Lori |
| Embree, Carolyn | Hartgrove, Judy O. | Kozar, Marybeth |
| Fannin, Sam | Hatter, Janice | Krause, Linda and Carl |
| Felendzer, Malgorzata | Hawersaat-Konich, Ann | Krech, Aimee Vafaie |
| Felicien, Tricia | Hawkins, Susie | Kumbum, Rammohan |
| Ferranti, Devin | Henderson, Gary | |
| Fickling, Lori | Heslep, Tom | |
| Fioretti, Cam | Hobbs, James | |
| Fisher, Jill | Holland, Charlotte | |

Individual Donors

- | | | |
|---------------------|------------------------------|---------------------------------|
| Aaron, Brenda | Basse, Joyce | Campbell, Mike and Debbie |
| Ablon, CS Cheryl | Bedeir, Marlene | Cangelosi, Kevin |
| Adams, Chellie | Bell, Bryan and Lisa | Canova, Darrell |
| Alagood, Robert R | Benton, Nancy and James | Carr, Brian |
| Ali, Dan | Bischof, Matt | Carrell, Mike |
| Amburn, Michael S | Blaess Jr., William | Cashmer, Jeff |
| Anaya, Stacie | Bonner, Buddy | Castro, Kari and Hiram |
| Andrews, Sheila | Boppana, Geeta | Chadaga, Sangeeta |
| Angelot, Lori | Bowen, Chris | Chelius, Kyle |
| Ashford, Josh | Brim, Amanda | Christensen, Adelina |
| Asing, Susie | Brink, Monika | Collins, Joe |
| Ayers, Lindsay M | Brittian, Terry and Sharlene | Collins, Sarae |
| Ball, Harry | Brodigan, Judy | Conrad, Scott |
| Bandy, Lee Ann | Brown, Ben and Susan | Cook, Marilyn |
| Banks, Jim and Lela | Buck, Alex and Mary Beth | Cooke, Karen Heid |
| Bankson, Matt | Buck, Carl | Cooney, Lauren Donder and David |
| Barrett, Karen | Buckley, Scott | Corbitt, Danny |
| | Calverley, Mary Ann | Corder, Gloria |

Individual Donors
(continued)

- Lacharite, Becky
- Langton, Barb
- Lantz, Mary Jo
- Lantz, Norma
- Laurito, Anthony
- Lee, Jongeul
- Lee, Romaine
- Lewis, Mike
- Ling, David
- Lombardi, Michael
- Longo, Andrew
- Lorentz, Renae
- Luna, Maria
- Marshall, Larry and Kim
- Martens, Murro M.
- Martinet, George and Karla
- Mathews, Sharon
- Maxwell, Lynn and Jamie
- Mayes, Taryn
- McClain, Lisa
- McGee, Allan
- McGee, Jerry
- McGee, Renee
- McGee, Tonia
- McKenzie, Jennifer
- Melton, John
- Miller, Tracy Scott
- Mitchell, Leslye
- Montez, Leah
- Mosley, Adrienne A.
- Mosty, Julie
- Motefaker, Mitra
- Mulero, Julio
- Mullen, Terrilynne
- Munro, Thomas M. and Julie W.
- Murphy, Calvin and Susan
- Murphy, Lynn
- Murphy, Michelle
- Murray, Yolanda
- Myers, Brent
- Nance, Gabe and Melanie
- Neighbors, Jamie
- Nelle, George
- Nelson, Ida
- Nelson, Jane
- Nelson, Pamela and Spence
- Nelson, Rebekah
- Neville, Michael
- Newbern, Ginger
- Nichols, Ronald
- Nikkel, David and BeLinda
- O'Hara, Carol
- O'Malley, Marcy
- Otte, David
- Page, Keri
- Pallini, Christina
- Parker, Mary
- Parrish, Jeffrey
- Paul, Robert
- Pelphrey, Connie
- Pfender, Renee
- Pillans, Kyle
- Pitt, Cory
- Placke, Fred
- Plaisance, Melissa
- Plunkett, Andrew
- Pope, Christine
- Prieto-Ballengee, Edna
- Prozник, Jenny
- Pyatt, Amanda
- Pyron, Savannah
- Quagliana, Chris
- Ragsdale, Bill
- Raiden, John and Rebecca
- Rapp, Lori
- Ratliff, Lynnora
- Ratnayake, Jeanna
- Rayburn, Beth
- Raymond, Tish
- Reddell, Penny and Bill
- Reedy, Richard
- Reese, Bonny
- Reid, Randall
- Reinhardt, Vianey
- Renner, Lee Ann
- Rentfro, Jody
- Renz, Dale
- Richardson, Eric and Cindy
- Ridder, Laura
- Rogers, Kevin
- Rogers, Mark and Barbara Sudie
- Romans, William E



Every year, LEF is proud to host two events that not only brings the community together in support of education but also raises a large sum of funds for scholarships, teacher grants and other LISD projects.

This year the annual *Evening for Education* gala and *Golf Classic* (postponed to October 2020 to abide by public health regulations) raised \$247,611.08!



- Rooney, Nick
- Rudkin, Dave
- Rupert, Jason
- Russell, Royal
- Rutherford, Linda
- Said, Cindy
- Salinas, Amy
- Salisbury, Lori
- Samford, JT
- Sandel, Lillian
- Sandoval, Frances P.
- Sato, Gordon and Kathy
- Scalise, Monica
- Sczepanski, Bill and Carolyn
- Self, Sean
- Sells, Katherine
- Shafferman, Gary and Terri
- Shearer, Carin Renee
- Sheffield, Trisha and Doug
- Shephard, Sissy
- Sidorenko, Suzanne
- Sigler, Carrie
- Skyler, Todd
- Sloan, Robyn
- Smith, Roy
- Smith, Stephen
- Southwick, Marianne
- Spitzer, Hayley
- Staley, Brent C
- Stewart, Candace
- Stewart, Carrie
- Stinson Family, The
- Suggs, Sherri
- Taggart, Peter
- Tallapaly, Mahesh
- Taylor, Lisa
- Thibodeaux, Paul
- Thimesch, Krona
- Thornton, Karen
- Throgmorton, Wayne
- Torres, Daniel
- Turner, Leslie
- Tweardy, Robert
- Tyagi, Gia
- Ueckert, Dean
- Veal, Heidi
- Vickery, Peter
- Waldrop, Hal
- Walker, Jackie
- Walker, Katie
- Walker, Lori
- Walter, Debbie
- Weatherford, Kim and Diana
- Webb, Steffanie D
- Webster, Jay
- Weitzman, Rose
- White, Hollie
- White, Jennifer
- Whitwell, John
- Wilson, Amber
- Wilson, Bart
- Wilson, Tristen
- Wren, Stephen
- Wright, Janice S
- Wright, Tamara
- Yang, Ning
- Zak, Andrea
- Zak, Richard

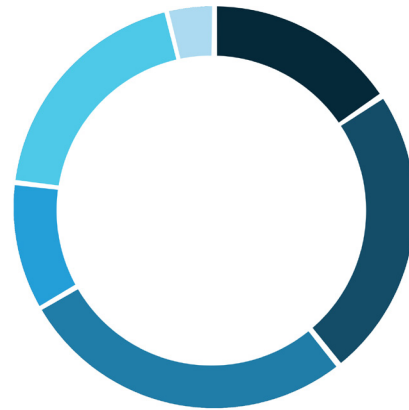
Thank you!

Statement of Activity

July 2019 - June 2020

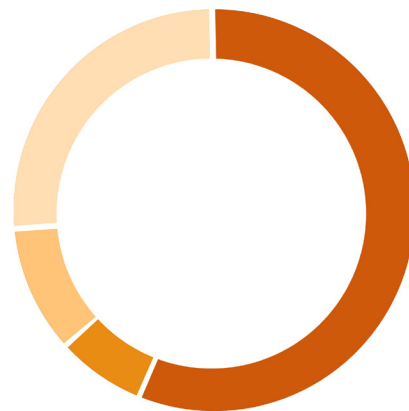
Revenue

Permanent Endowments	\$ 141,561.31	16%
One-Time Use Scholarships & Grants	\$ 215,002.91	24%
Events	\$ 247,611.08	27%
LISD Special Programs	\$ 93,395.51	10%
Employee Giving	\$ 173,183.08	19%
Area of Greatest Need	\$34,622.75	4%
Total Revenue	\$ 905,376.64	



Expenditures

Scholarships, Grants and Awards	\$ 507,919.80	56%
Events	\$ 64,946.33	7%
LISD Special Programs	\$ 93,395.51	10%
Operations	\$ 239,115.00	26%
Total Expenditures	\$ 905,376.64	



Funds Designations from Donors



Scholarships	35%
Fundraising Events	27%
Area of Greatest Need	24%
Grants and Employee Awards	11%
LISD Projects	3%

Awards Expenses \$507,919.80



Scholarships and Fellowships	48%
Teacher/Campus Grants	47%
LISD Excellence Awards	3%
Software, Postage, Signage	2%

Operating Expenses \$239,115.00



Staff and Support	80%
Insurance and Advisory	10%
Software, Postage, Supplies	10%

How To Get Involved

1 Stay Connected

Follow us on social media or join our mailing list to stay up to date on news and opportunities to help. It makes a tremendous impact when you share our posts with your network! @LEFforLISD

2 Fundraise

Are you planning a bake sale or potluck? Looking to designate your birthday to a nonprofit? Want to start a friendly online competition between friends? These are all wonderful ways to fundraise for your favorite cause! Contact us at info@lisdef.com to learn how to get started.

3 Volunteer

We host two main fundraiser events during the school year that could always use an extra set of hands! We also search for readers throughout the school year to help evaluate scholarship applications. Reach out to us at info@lisdef.com and we can help connect you to the right people.

4 Donate

Every dollar counts! You can also help make a difference by donating auction items for fundraising events or buying a team/table at either of our fundraising events. Learn more at lisdef.com

Help Us Celebrate Our 30th Anniversary!

2020 - 2021

Support Teacher Grants:

Virtual Campaign

September 16, 2020 -
October 1, 2020

30 Hours for 30 Years:

Virtual Campaign

October 8, 2020 -
October 9, 2020

Golf Classic

October 12, 2020

Evening For Education

October 18, 2020

LEF Week:

Online Auction

October 12, 2020 -
October 18, 2020

Year-End Campaign

December 28, 2020 -
January 1, 2021

Support Senior Scholarships:

Virtual Campaign

March 15, 2021 -
April 1, 2021

Scholarship and Fellowship

Awards Ceremony

April 20, 2021



LEWISVILLE ISD EDUCATION
FOUNDATION



Building Community,
Enriching Education